



ELBLANDKLINIKUM  
RIESA

GANZ NAH BEI MIR

## REGISTRATION & PARTICIPATION FEE

**Participation fee:** € 300.00 per person

**Please register per e-mail** at the office of the Clinic for  
Internal Medicine:  
Mandy Richter  
E-Mail: [mandy.richter@elblandkliniken.de](mailto:mandy.richter@elblandkliniken.de)

## VENUE

ELBLANDKLINIKUM Riesa  
Conference room level 6 and central endoscopy  
Weinbergstraße 8  
01589 Riesa | Germany

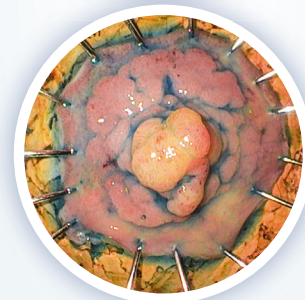
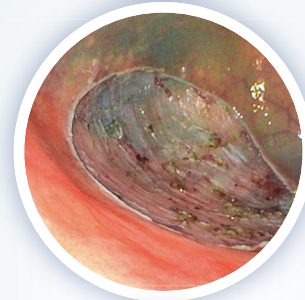
## ACKNOWLEDGEMENT

Continuing education points have been applied for  
at the SLÄK.

## ROUTE



[WWW.ELBLANDKLINIKEN.DE](http://WWW.ELBLANDKLINIKEN.DE)



## WORKSHOP ENDOSCOPIC SUBMUCOSAL DISSECTION (ESD)

3 – 6 June 2026

Elblandklinikum Riesa, Germany

Dear Colleagues,

We are pleased to invite you to our fifth practical workshop on Endoscopic Submucosal Dissection (ESD), with a main focus on colorectal ESD. The course is designed to provide hands-on training and share practical tips for those starting with ESD or aiming to improve their technique.

The four-day program includes three days of live demonstrations in our endoscopy unit, with two ESD procedures per day and detailed discussion of each case. Participants are welcome to attend one, two, or all three of these days. On the final day, participants will train on swine stomach and colon models. Topics covered will include indications for ESD, instruments and accessories, basic techniques, and pathological assessment of specimens.

Participation is limited to small groups to ensure optimal hands-on experience. The participation fee is 300 Euro.

ELBLANDKLINIKUM Riesa is located near Dresden, a city of rich cultural heritage, and Meissen, known for its medieval castle and world-famous porcelain. We encourage you to enjoy the local attractions during your stay.

For registration and further details, please contact:  
[mandy.richter@elblandkliniken.de](mailto:mandy.richter@elblandkliniken.de)

We look forward to seeing you in Riesa.

## PROGRAM

### DAY 1 – 3 June 2026

- |               |  |
|---------------|--|
| 08:00 – 08:10 | <b>Welcome &amp; Introduction</b><br>Dr. Petr Sergeev                |
| 08:10 – 08:40 | <b>Indications for ESD in Colorectal Lesions</b><br>Dr. Petr Sergeev |
| 09:00 – 13:00 | <b>Live Demonstrations &amp; Case Discussion</b>                     |
| 13:30 – 14:30 | <b>Colonic ESD Devices</b><br>Dr. Mariia Nedoshitova                 |

### DAY 2 – 4 June 2026

- |               |  |
|---------------|--|
| 09:00 – 13:00 | <b>Live Demonstrations &amp; Case Discussion</b> |
| 13:00 – 15:00 | <b>Hands-on Training with Swine Models</b>       |

### DAY 3 – 5 June 2026

- |               |   |
|---------------|---|
| 09:00 – 13:00 | <b>Live Demonstrations &amp; Case Discussion</b>              |
| 13:30 – 14:00 | <b>Basics of Colorectal ESD Technique</b><br>Dr. Igor Ehrmann |
| 19:00 – 21:00 | <b>Get-together</b><br>(venue to be announced)                |

### DAY 4 – 6 June 2026

- |               |   |
|---------------|---|
| 09:00 – 09:30 | <b>Challenges in Detecting Early GI Neoplasia</b><br>Dr. Hendrik Strebel  |
| 09:30 – 10:00 | <b>Pathological Assessment of ESD Specimens</b><br>Dr. Steffen Kellermann |
| 10:00 – 14:00 | <b>Hands-on Training with Swine Models</b>                                |